

FOR SALE - SPECIFICATIONS

EL MIRAR II



33.53M / 108'00"

THE EXPERT'S VIEW

This outstanding Horizon yacht has been impeccably cared for by her full-time crew. From 2017 to 2018, the yacht received a major mechanical refit as well as many cosmetic upgrades. The yacht has been maintained to the highest of standards. Motor yacht EL MIRAR II has the feel of a much larger yacht. She features an open layout that creates a home-like ambiance. The luxury yacht's elegant interior is adorned with beautiful, polished cherry wood, sumptuous furnishings and large windows, which fill the space with an abundance of natural light. This Horizon's main salon is the perfect place for socializing and relaxing. She features a large well-equipped country kitchen that would please any chef.

SPECIFICATION

BUILDER	Horizon
BUILT / REFIT	2007 / 2018
BEAM (M/FT)	7.19 M / 23'07"
DRAFT (M/FT)	2.13 M / 7'00"
HULL MATERIAL	Fiberglass
GROSS TONNAGE	204 Ton
ENGINES	Twin Caterpillar C-32A 1825hp
SPEED	12 KNOTS / 17 MAX
FLAG	British Virgin Islands
DESIGNER	Juan Carlos Espinoza
GUEST/ STATEROOMS	8 / 4
CREW	4 - 6

Yachts offered are subject to availability. The particulars are believed to be correct but are not guaranteed and may not be used for contractual purposes. Specification provided for information only.

EL MIRAR II

MAIN CHARACTERISTICS

Name:	EL MIRAR II	
Type:	Motor Yacht	
Builder:	Horizon	
Year:	2007	
Refit Year:	2018	
Hull No.	10716J708	
Yacht Model:	108	
LOA (M/FT):	33.53 M / 108'	
LWL (M/FT):	29.08 M	9505"
Beam Overall (M/FT):	7.19 M	2307"
Draft (Full Load) (M/FT):	2.26 M	705"
Gross Tonnage:	204	
Hull Material:	Fiberglass	
Decks:	Teak	
Flag:	British Virgin Islands	
Designer:	Juan Carlos Espinoza	
Main Engines:	Twin Caterpillar C-32A 1825hp	
Speeds:	17 Max 12 Cruising	
Range:	800 nm @ 10 knots	
Guest Accommodation:	Guest accommodations for 8 in 4 Staterooms	
Crew Accommodation:	4-6 in 2 cabins	

EL MIRAR II

RECENT UPGRADES

All soft goods, Settee's and chairs recovered. New carpet has been installed throughout. New mattresses in Master Stateroom and VIP Stateroom. New bedding throughout all staterooms. New Viasat high speed Sailor 600 satellite.

ACCOMMODATIONS

OVERVIEW:

EL MIRAR II offers accommodations for up to eight guests in four beautifully appointed staterooms. The master stateroom offers privacy while surrounding the owners in comfortable elegance. The suite features a centerline king-sized bed, large walk-in cedar closets and his-and-hers marble en-suite baths with a Jacuzzi tub and a shower. The yacht's additional staterooms include a king VIP, a queen and a twin — each stateroom is complete with its own en-suite bath.

SALON:

The breathtaking main salon is a masterpiece of form and function, with comfortably elegant accommodations for entertaining or simple relaxation. The Kaleidescape entertainment system provides a choice of music, TV or movies, while you relax in a favorite chair or on the wraparound L-shaped settee.

- Large, wraparound leather settee to port picture windows with wooden blinds throughout
- Massive cherry wood counter with storage to starboard and built-in retractable 50" TV
- Sub-Zero undercounter refrigerator Sub-Zero undercounter wine cooler
- Formal dining room with beautiful high gloss, inlaid table
- Forward are two glass front armoires
- High gloss cherry table
- Wall mural
- (2) glass front armoires with ample storage below

GALLEY:

Spacious, well-equipped Country Kitchen sure to please any chef. Granite countertops throughout and three (3) leather bar stools. Oversized U-shaped Dinette with granite-topped tables and lots of storage space. Teak & holly flooring throughout.

- Stainless steel sink
- Sub-Zero full-size side-by-side refrigerator/freezer
- GE Profile trvection oven
- GE Profile 4-burner cooktop
- GE Profile Advantium microwave
- GE Profile trash compactor
- GE Profile Quiet Power 7 dishwasher
- Black & Decker 12" countertop convection oven

EL MIRAR II

MASTER STATEROOM:

The full-beam master stateroom is amidships and provides the owners with privacy while surrounding them in comfortable elegance.

- Centerline king berth with built-in nightstands and mirrored bulkhead with quilted headboard
- Smoked glass, lighted tray ceiling
- Large, cedar-lined walk-in closet to port
- Shoji screens
- (2) additional cedar-lined closets to starboard
- Entertainment center including 40" HDTV
- Safe for valuables
- His and hers ensuite heads with marble walls / floors / Jacuzzi tub and large common marble shower
- Cherry wood vanities
- Recessed lighting
- Gold fixtures

VIP FORWARD STATEROOM:

The spacious VIP stateroom is forward and includes a king size bed

- King size bed with mirrored bulkhead and fabric headboard
- Large cedar-lined closet
- (2) end tables
- Shoji screens
- 23" flat screen TV
- Ensuite head with shower

TWIN STATEROOM PORT SIDE:

The twin bed guest stateroom is to port and can be converted to a single king if so desired.

- (2) twin beds (convertible)
- Movable nightstand between beds
- Shoji screens
- Cedar-lined closet
- Ensuite head with shower

EL MIRAR II

QUEEN STATEROOM STARBOARD SIDE:

The queen bed guest stateroom is to starboard and is well-appointed.

- Queen size bed with mirrored bulkhead and fabric headboard
- (2) built-in nightstands
- Cedar-lined closet
- Shoji screens
- Ensuite head with shower

CREW ACCOMODATION:

Functional crew quarters provide sleeping accommodations for a captain and three to five crew in two cabins, and with a Pullman berth and convertible dinette in the dining area.

- Captain's cabin to starboard with ensuite head and double berth
- Crew stateroom to port with over / under berths and ensuite head
- Galley area to port with wraparound, convertible lounge/table and pullman berth
- Full galley with Sub-Zero refrigerator / freezer
- Kitchen Aid 2-burner cooktop
- Stainless steel sink
- GE Profile Advantium microwave

AFT DECK AND HULL:

Boarding on the aft deck, you immediately notice the teak decks, the high gloss inlaid table with seating for a crowd, the built-in granite topped bar with stools and the 30" flat screen TV.

- Teak deck
- Built-in bar with bar stools
- Sub-Zero refrigerator
- U-Line ice maker
- 30" flat screen TV
- Large high gloss cherry wood table
- Built-in seating aft, with (3) additional chairs and table
- (2) sets of curved stairs leading to an oversized swim platform

EL MIRAR II

HELM / SKYLounge:

The combination command center and skylounge provides a spacious, functional area for the captain, crew, owner and guests.

- Well laid-out helm with excellent visibility
- (2) Stidd captain's chairs
- Port and starboard watertight opening wing windows
- Built-in double seating to starboard
- Teak and holly flooring (command center)
- Plush patterned carpeting in skylounge
- Large, U-shaped leather settee with high gloss cherry table to starboard in skylounge
- High gloss cherry credenza to port with pop-up 40" TV
- Sub-Zero refrigerator / U-Line ice maker
- Built-in 7-drawer inlaid high gloss cherry desk with chair to starboard
- Day head to starboard

Walking aft from the skylounge onto the expansive aft boat deck, you will notice the 30" flat screen TV to port, a small conversation area with two Rattan chairs and a large, centerline, two-tier granite topped wet bar with (3) bar stools. The bar area cleverly conceals a top load freezer, a Sub-Zero refrigerator and a U-Line ice maker. To starboard is a complete mirrored Wolf BBQ grille with 2-burner cooktop for al fresco meal preparation and built-in seating / table. Aft is the large boat deck that is capable of holding several tenders and water toys, a Steelhead 2500# crane and one SOLAS 96 life raft.

- (2) Rattan side chairs
- Large 2-level granite-topped wet bar with (3) bar stools
- Sub-Zero top load freezer
- Sub-Zero refrigerator
- U-Line ice maker
- Wolf BBQ grille with 2-burner cooktop
- (2) 16-person SOLAS 96 life rafts
- (1) EPIRB
- Steelhead ST2500 crane

EL MIRAR II

SKYBRIDGE:

- Wrap-around seating aft of hot tub
- Custom hardtop
- Master Spa "Legend Series" hot tub
- U-Line refrigerator / ice maker
- Custom stainless steel lighted mast (2) Frigidaire washer / dryers – (1) in companionway, (1) in crew quarters
- Underwater lights
- Bensonzoni boarding passerelle
- Custom burgee flagpole at bow with LED lights
- (2) custom fiberglass storage boxes at bow
- Twin stainless-steel anchors (in hull pockets)
- (2) 16-person SOLAS 96 life rafts
- (2) EPIRBs

ENGINE AND MECHANICAL EQUIPMENT:

- Twin CAT C-32A diesel engines, 1825hp each
- NAIAD zero speed stabilizers
- Oil change transfer system
- Sea Recovery 1200gpd water maker
- Headhunter "Tidal Wave" sanitation system
- Siemens "Flexi-Fog" fire suppression system
- (3) Torrid 30g water heaters
- Marine Air 20T chilled water A/C system with (4) 5T chillers and digital controls
- (2) Maxwell 4500 windlasses at bow
- Maxwell 3500 rope windlass at bow
- Underwater exhaust
- Tides dripless shaft logs and rudders
- (4) Watertight bulkheads (engine room forward and aft, forward bulkhead at master, crash bulkhead aft of anchor locker)
- Aluminum H5083 marine grade fuel tank (5170g capacity)

ELECTRICAL EQUIPMENT:

A full complement of electrical equipment provides ample power both ashore and at sea.

- (2) Kohler 65kw gensets, with John Deere engines, in sound boxes - port: 11,392 hours (Top End 9000 hours); starboard 10,419 hours (Top End 9000 hours)
- ASEA frequency / transformer system (75 KVA)
- (4) Glendenning 100amp cablemaster – (2) at bow; (2) at stern
- (2) Trace 4024 4kW inverters/chargers
- (2) extra engine-driven 120amp alternators
- (20) 350AH service batteries with bar connection
- (4) 200AH starting batteries for main engines with (2) 23amp battery chargers
- (2) 120AH starting batteries for generators with (1) 50amp battery charger
- Guest vapor-proof battery switch

EL MIRAR II

CAPACITIES

Gross Tonnage:	204	
Fuel Capacity:	9568 Liters	5170 Gallons
Fuel Burn: 12.5 kts at 70 gph		
Fresh Water Capacity:	3000 Liters	793 Gallons
Water Makers:	4542 Liters	1200 Gallons

MAIN MACHINERY

Main Engines:	Twin CAT C-32A, 1825hp
Engine Hours:	Port: 6511 Overhaul at 4937 Hours Starboard: 6495 Top End at 5000 hours

GENERATORS:

Generators:	(2) Kohler 65kw gensets with John Deere engines
Generator Hours:	Port: 11392 Top End at 9000 hours Starboard: 10419 Top End at 9000 hours

GALLEY & LAUNDRY EQUIPMENT

MAIN GALLEY EQUIPMENT

Cooking Equipment:	GE Profile trivection oven GE Profile 4-burner cooktop
Refrigeration/Freezer:	Sub-Zero full-size side-by-side refrigerator/freezer
Microwave:	GE Profile Advantium microwave
Dishwasher:	GE Profile Quiet Power 7 dishwasher
Other:	GE Profile trash compactor

CREW GALLEY / MESS EQUIPMENT / COOKING EQUIPMENT

Microwave:	GE Profile Advantium microwave
Refrigeration/Freezer:	Full galley with Sub-Zero refrigerator / freezer
Other:	Kitchen Aid 2-burner cooktop

EL MIRAR II

OTHER EQUIPMENT

Spa Tub: Master Spa "Legend Series" hot tub

TENDERS & TOYS

Tenders: 15' (4.57m) Zodiac (2012), 50hp Yamaha engine (2012)
2 story inflatable slide and a 2 story inflatable climbing wall.

EL MIRAR II

2018 REFIT:

Flybridge:

- New Jacuzzi control panel and pumps rebuilt
- Nauticomp Displays rewired and all systems operable
- Updated overhead LED lights and installed dimmer
- Refinished teak steps to Jacuzzi and stairs from boat deck
- Installed new autopilot joystick on helm seat
- New AP-70 autopilot installed
- New Canopy was made
- Kobelt helm pump rebuilt at drive station
- All areas have been 3-step buffed

BOAT DECK:

- Fiberglass repair to deck, new non-skid teak decks refinished
- New LED deck lights installed plus staircase lights to flybridge
- New spectra line installed on Davit
- All areas 3-step buffed
- Exterior house seam has been resealed
- All exterior wheelhouse windows have been resealed
- New Yamaha Jet Ski
- Repaired Zodiac tender and rebuilt 50hp outboard engine
- RTI remotes reprogrammed for AV / IT
- Upgraded the breaker for all exterior deck outlets
- New stern light installed

WHEELHOUSE:

- Partial re-wire of the dash
- All Nauticomp screens programmed for redundancy, (3) screens are new
- New AP-70 autopilot
- New autopilot joystick on helm chair
- Installed new A/C ducting under helm
- Kobelt Steering pumps replaced
- Reprogrammed Naiad program for stabilizers
- Air handlers serviced
- Remounted Caterpillar screens
- Separated wheelhouse and boat deck outlets (each have their own breakers)
- KVH and VSAT updated with new software
- New Bow thruster control
- New blinds on front wheelhouse windows

EL MIRAR II

BOW AND MAINDECKS:

- Both windlass have been completely rebuilt
- New windlass control fobs installed on bulwarks
- Bulwarks painted back to forward boarding doors
- Bosun's locker redesigned with fishing rod-holders
- New shocks on all hatches
- Anchor plates re-sealed
- Bow thruster oil replaced and new filter
- Bow sun-cushion area has been wet sanded and buffed.
- New paint on lower areas
- Brand new non-skid on all decks leading to aft deck
- New locks installed on galley exterior doors
- All exterior windows have been resealed
- New cushions on forward seating area
- New LED deck lights installed
- Fresh water wash down re-plumbed for anchors
- Fire Pump control in bosun's locker replaced
- New LED lights in bosun's locker
- Both forward Glendenning's repaired
- New Delta-T weather boxes installed mid-ship
- New Side LED floodlights installed
- All fairleads re-caulked
- New control pedals for capstans and windlass
- New windshield wipers

AFT DECK AND TRANSOM:

- Teak decks on staircases refinished
- New LED lights installed on staircases
- RTI remote has been updated for AV / IT
- Transom has been repainted
- Transom deck fiber glass repair and new non-skid
- Boarding ladder repaired
- Both Glendenning's repaired
- New lock installed on Transom Door plus new rubber seal
- Removed faulty windlass from center of transom deck
- Passerelle serviced
- Both aft deck capstans rebuilt and new wiring plus foot pedals
- New shocks installed on transom deck hatches
- Rub rails have been re-caulked around entire boat
- Hull 3-step buffed

EL MIRAR II

MAIN SALON AND GALLEY:

- New TV in salon
- AV / IT upgraded with new software
- All air handlers serviced
- Main panel for all vessel lights has been simplified and dimmers installed
- Fire damper actuators under windows have been replaced
- Fire dampers and hinges repaired and fully operable
- Dish Network boxes stacked in forward galley storage
- Updated electronics
- Galley stove has new control board installed
- Galley fridge has new drain line
- Air handlers in galley serviced
- New TV in galley with RAM mount installed
- New carpet throughout
- New Viasat high speed Sailor 600 satellite

LOWER STATEROOMS AND BILGES:

- All bilges repainted
- All sump boxes have new pumps and float switches
- New bilges pumps and check valves installed
- Headhunter black water treatment has new pump
- New Accumulator tank for black water system
- New Accumulator tank for fresh water system plus individual tanks replaced for rooms
- (2) new fresh water pumps plus new breaker installed
- (2) new grey water pumps and check valves installed
- New water heater installed under VIP
- Most closets have been updated to LED lights
- New Grey water tank Sentry
- P-traps replaced under all stateroom sinks
- LED lights installed in bilges plus New DC lights
- All air handlers serviced
- RTI remotes updated for new software
- Washer and dryer serviced
- New Master & VIP mattresses
- New bedding throughout

CREW QUARTERS, RUDDER ROOM, AND CONTROL ROOM:

- New black water transfer pump
- All air handlers serviced
- Steering rams rebuilt
- Rudders have been dropped and bearings replaced
- All thru hulls exercised and serviced
- New live well circulation pump installed
- Removed old wiring and hoses that were left from previous repairs
- New pump and float switch installed in sump box
- Diesel crash pump serviced

EL MIRAR II

- New blowers for each crew bathroom
- New mattress in captain's room
- All (4) chillers have been serviced, plumbing and valves repaired for leaks
- ASEA converters serviced

ENGINE ROOM:

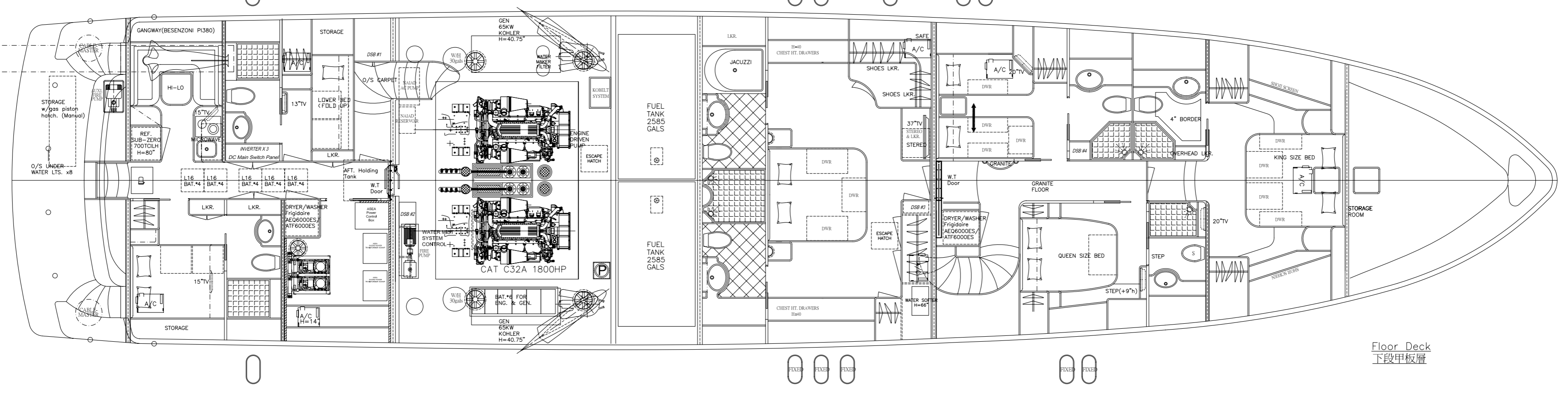
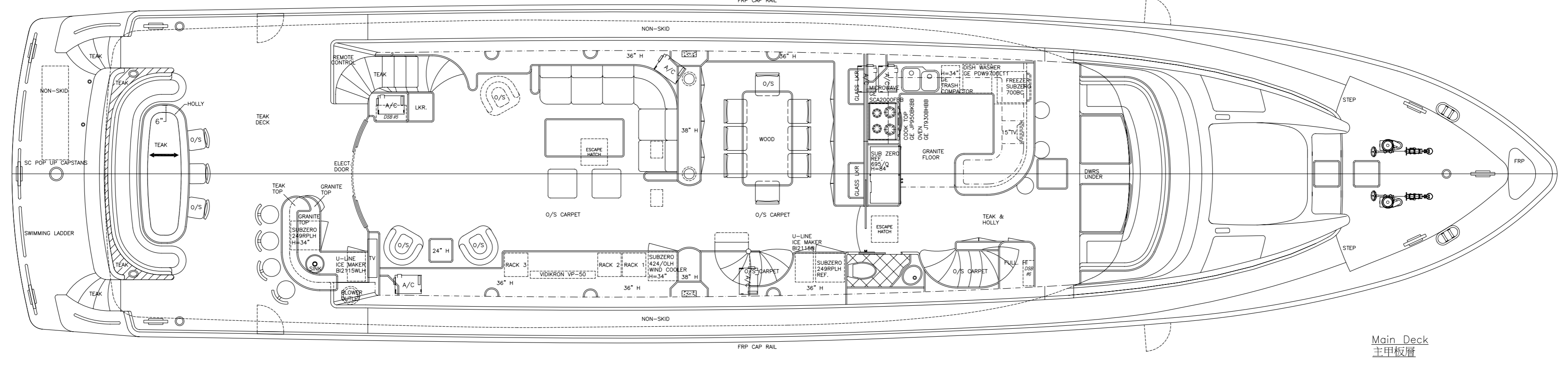
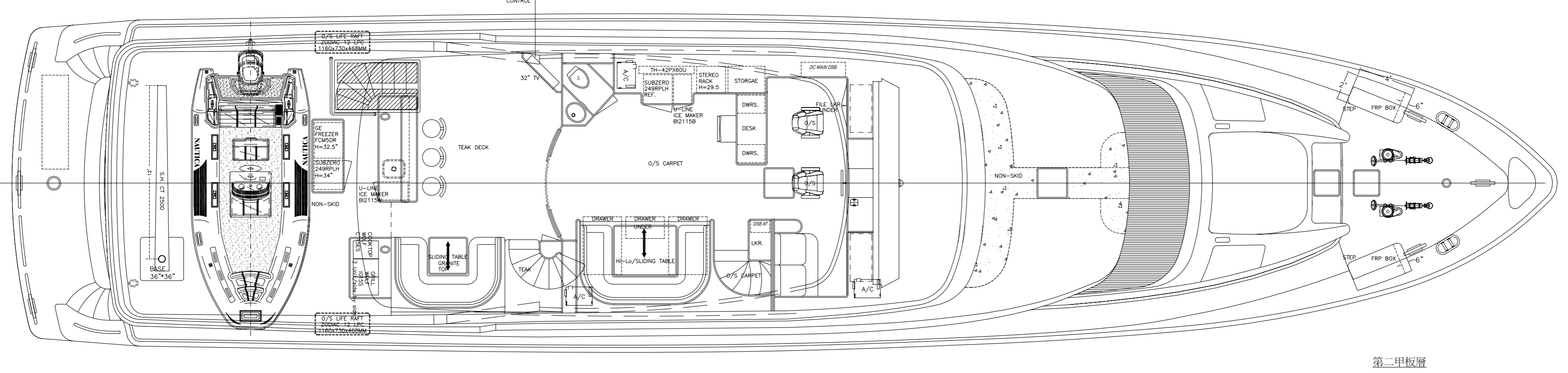
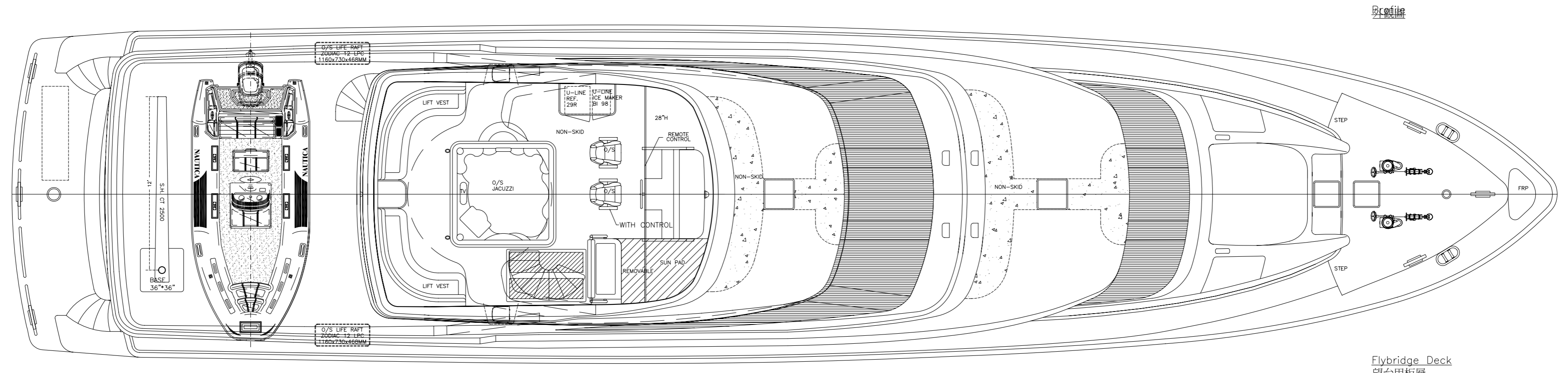
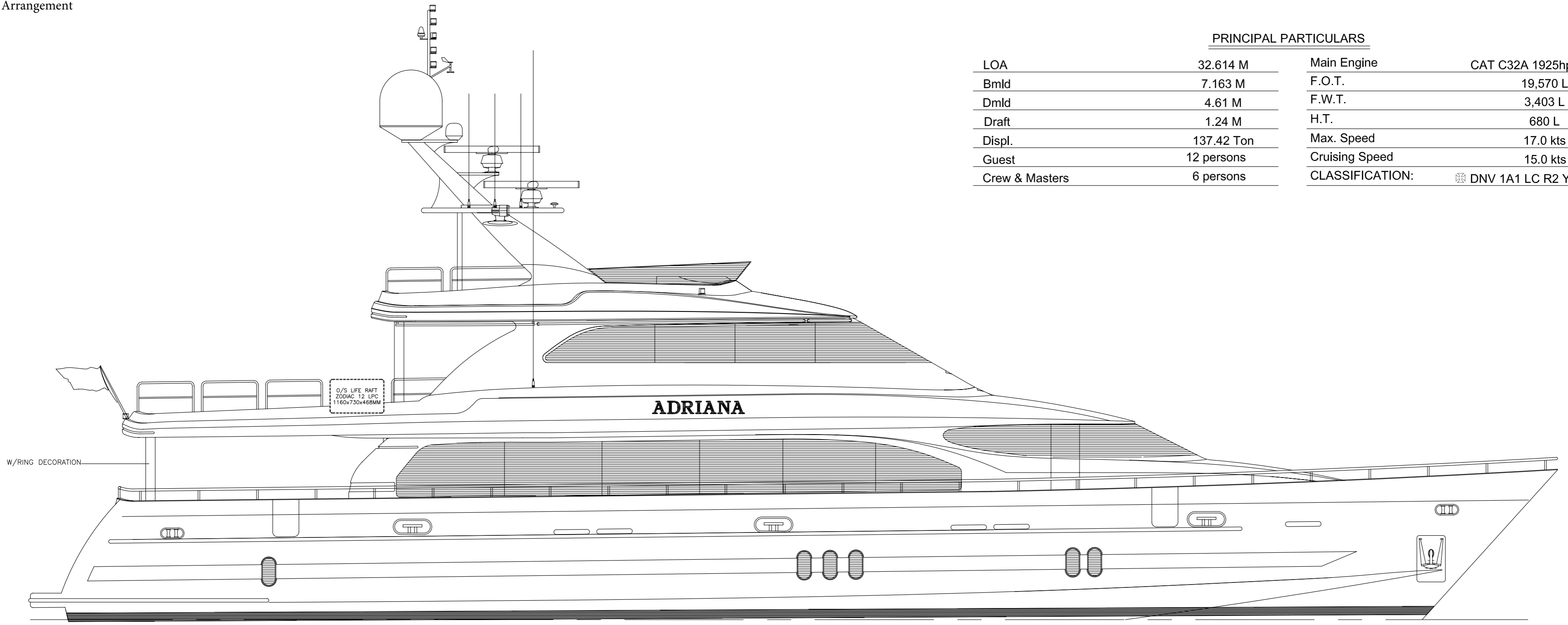
- Port main engine complete overhaul at 5,000 hours
- Starboard main engine top end 5,000 hour service
- Both transmissions serviced
- Both generators top end service around 9,000 hours
- Hydraulics system rebuilt (heat exchangers, filters, hoses, gear pumps, etc.)
- Stabilizers dropped, new seals installed and full service, suppressors recharged
- Exhausts removed and fiberglass repaired (exhaust risers repaired and serviced)
- Brand new A/C fire pump
- New valves on water heaters
- Many hydraulic hoses replaced
- Shafts pulled and checked for straightness
- Props sent out to be machined
- All cutlass bearings brand new
- Shaft seal assemblies and all related systems new
- New bottom paint and prop speed on running gear
- New Zincs
- New valves on main seawater manifold
- New valves installed off sea chests
- Steering system gone through and all necessary repairs done
- Fire / safety systems certified
- Rubber Heron Rib mats installed on engine room floors
- All accumulator tanks for fresh water are new
- Air compressor drained and serviced
- Blue rope lighting repaired
- New LED lights installed
- Toolbox mount added above port transmission
- (2) new raw water pumps installed for air conditioning system

DISCLAIMER

All speeds, measurements, capacities, consumptions, etc. may be approximate or estimated. Specifications provided for information only. Data was obtained from sources believed to be reliable and is not guaranteed by owner or brokers. Buyer assumes the responsibility to ascertain the correctness of all data contained herein and otherwise provided and must instruct his agent and surveyors to confirm all details for accuracy prior to purchase. Subject to prior sale price and inventory change or withdrawal from market without notice.

PRINCIPAL PARTICULARS

LOA	32.614 M	Main Engine	CAT C32A 1925hp	2 sets
Bmld	7.163 M	F.O.T.	19,570 L	
Dmld	4.61 M	F.W.T.	3,403 L	
Draft	1.24 M	H.T.	680 L	
Displ.	137.42 Ton	Max. Speed	17.0 kts	
Guest	12 persons	Cruising Speed	15.0 kts	
Crew & Masters	6 persons	CLASSIFICATION:	DNV 1A1 LC R2 YACHT	



General Notes	No.	Revision/Issue	Date
1	1		

TITLE :	General Arrangement	CLASS/CODE:	DNV/MCA	DATE	2007/09/19
DWG No.	A-01C	DWG-BY	Nicole Chen	CHECK-BY	
BOAT No.	V107-316	SCALE	none	EDITION	

