

ROMEO FOXTROT



LOA:	116' (35.36m)	Delivery/Model Year:	2023
Beam:	25' 7" (7.8m)	Builder:	HARGRAVE
Max Draft:	6' 6" (1.98m)	Type:	Motor Yacht Tri-Deck
Tonnage:	317.00	Staterooms:	5
Speed:	17 Knots 20 Knots	Fuel Cap:	8350 Gal
Location:	Fort Lauderdale, Florida United States	Water Cap:	1000 Gal
VAT Paid:	US Duty Paid	Engines:	2x, Caterpillar, C32, 1900 HP
		Price:	(€18,767,430 EUR est.) \$19,800,000 USD

Additional Specifications For ROMEO FOXTROT:

LOA:	116' (35.36m)	Delivery/Model	2023
Beam:	25' 7" (7.8m)	Year:	
Min Draft:	5' 11" (1.8m)	Year Built:	2022
Max Draft:	6' 6" (1.98m)	Builder:	HARGRAVE
Hull Material:	FRP	Type:	Motor Yacht Tri-Deck
Superstructure:	GRP	Top:	Hardtop
Hull Config:	Semi-Displacement	Engines:	1900 HP, Twin, Inboard, Diesel, Caterpillar, C32,
Hull Designer:	Jack Sarin	Staterooms:	5
Deck Material:	Teak	Sleeps:	10
Tonnage:	317.00	Heads:	10
Speed:	Cruising 17 Knots Max 20 Knots	Crew Quarters:	1
Int Designer:	Yacht Interiors By Shelley	Crew Berths:	8
Ext Designer:	Hargrave Design Team	Captain Cabin:	Yes
Fuel Capacity:	8350 Gal	Classifications:	RINA Private Unrestricted Navigation
Water Capacity:	1000 Gal	MCA:	ISM:
Holding Tank:	500 Gal		
Location:	Fort Lauderdale, Florida United States		
Price:	(€18,767,430 EUR est.) \$19,800,000 USD		
Tax Status:	US Duty Paid		

**ROYAL YACHT
INTERNATIONAL**

Le Bahia, 39 Avenue Princesse
Grace
, 98000
Monaco

ROMEO FOXTROT

P: +377 99 90 72 44
sales@royalyacht.it
<https://royalyachtinternational.com/>

Builder's Remarks

The specifications can be customized to meet the Buyer's specific requirements, while adhering to Hargrave Custom Yachts stringent quality standards. Hargrave's team of Naval Architects, Engineers, and Interior and Exterior Architects will provide expert consultation on systems and construction standards to ensure that the Buyer's choices align with these standards and do not compromise the overall quality of the vessel."

Description

This sporty yet chic Tri-deck yacht is true testament of exquisite craftsmanship and appereled elegance. The generous floor to ceiling windows, the 7' 2" headroom, and flow of plush decor and exotic veneers features in silvers and walnut exude the air of a luxury resort. The color palette

is organic and bold with harmonious sea blues, graphite tones and strong but small doses of ebony. There are architectural features incorporated into the staircases, ceiling details and designer details that are enhanced with recessed lighting that add to the unique personality of this yacht.

The Master suite is full beam, on the Main Deck and is a voluptuous, comfortable and extraordinary retreat with a huge dual bath with privacy and 2 walk-in closets. There are (5) staterooms suites, in total, each featuring king-sized berth for a comfortable and grand experience.

Designer's Walkthrough and main design features

Romeo Foxtrot is truly a masterpiece of chic contemporary luxury. Allow us to take you on a journey through the design teams' favorite features of the yacht.

As the lead designer on this project my primary goal was to create a yacht with uncompromising amenities and luxurious comfort. Our first mission was to design a floor plan that's function was beyond reproach. This Tri deck motor yacht has many exciting and outstanding features. The goal was to create a luxury vessel

that has thoughtful gathering areas that are beyond comfortable, feels intimate for long conversations and relaxing and is easily accessible for crew to deliver discrete service

1. Chic/Contemporary Design & Decor:

The interior of "Romeo Foxtrot" exudes a chic and contemporary ambiance that instantly captivates anyone who steps aboard. Every corner of this yacht is a testament to the harmonious fusion of modern design and timeless luxury.

2. Head Room 7' 2"

Experience a sense of spaciousness like no other with a remarkable headroom of 7 feet and 2 inches, creating an open and airy atmosphere throughout the yacht.

3. Interior Volume Equal to Much Larger Vessel:

Don't let its sleek exterior fool you; "Romeo Foxtrot" boasts an interior volume that rivals vessels of much larger size. You'll be amazed by the generous living spaces within.

4. True Tri-Deck With three decks to explore:

"Romeo Foxtrot" offers a variety of distinct areas for relaxation, entertainment, and leisure, ensuring a memorable journey every time. Guest suites

Deck, Master and Main Deck, Sky Lounge and Wheel House Deck and last the Spa/Sun Deck.

5. (5) King Suites/Guest:

For the utmost in guest comfort and privacy, the yacht features five king-sized suites, each a luxurious haven in its own

**ROYAL YACHT
INTERNATIONAL**

**Le Bahia, 39 Avenue Princesse
Grace
, 98000
Monaco**

ROMEO FOXTROT

**P: +377 99 90 72 44
sales@royalyacht.it
<https://royalyachtinternational.com/>**

right.

6. Sleeps Total of 8 Crew:

A dedicated crew is ready to provide impeccable service. The yacht comfortably accommodates a crew of 8, ensuring that your every need is met with precision. With the Captains Suite on Sky Lounge/Wheelhouse Deck.

7. Very Large Windows/12" Off Deck:

Large, panoramic windows, positioned 12 inches off the deck, invite natural light to flood the interior, offering breathtaking views of the surrounding seascape.

8. Motorized Window Treatments:

Effortlessly adjust the ambiance with motorized window treatments, allowing you to control privacy and light at the touch of a button.

9. Large TVs in All Viewing Locations:

Entertainment is at your fingertips with large-screen TVs thoughtfully placed in all viewing areas, ensuring you never miss a moment of your favorite shows or movies.

10. Exotic Veneers and Marble of Superior Quality:

Experience opulence in every detail; with exotic veneers and superior-quality marble adorning the yacht's interior, creating a sense of refined luxury.

11. Expert Joinery and Cabinetry Work:

Every inch of "Romeo Foxtrot" is a showcase of expert joinery and cabinetry work, demonstrating the pinnacle of craftsmanship and attention to detail.

12. Primary/ Master with Private (2) Baths and (2) Walk-in Closets:

The master suite is a true masterpiece, featuring not one but two private baths and two walk-in closets, offering unparalleled indulgence and comfort.

13. Day Heads (4):

Located on all (4) decks Convenience is key with day heads thoughtfully placed on all decks, ensuring that comfort is always within easy reach.

14. Captain Suite on Upper Deck by Wheelhouse (separate from crew):

The captain enjoys a private retreat on the upper deck, separate from the crew's quarters, offering an elevated level of privacy and authority.

15. Breakfast Settee for (4) Inside Galley:

Enjoy casual breakfasts in style with a settee for four within the galley, providing a cozy and intimate dining experience as you plan your day with the chef.

16. Spa/ Sun Deck:

A perfect gathering area with a waterfall style spa with a glass face, sunbeds on each side, a bow view with another dining table for 10 and settee and an abundant bar and bath to starboard. A breath-taking sanctuary perfect for unforgettable days or nights under the open sky.

And like all the other levels has a Day head. The pallet is grays, limes, lemons and off-whites. The perfect space to view The Islands underway or sip a ice cold drink in the shade.

17. Beach Club with Steam Room for (6):

**ROYAL YACHT
INTERNATIONAL**

**Le Bahia, 39 Avenue Princesse
Grace
, 98000
Monaco**

ROMEO FOXTROT

**P: +377 99 90 72 44
sales@royalyacht.it
<https://royalyachtinternational.com/>**

Relax and rejuvenate in the yacht's beach club, complete with a steam room for six, creating a spa-like oasis on the water. Just behind the aft deck and down a stair is the beach club. The transom folds down and becomes the day time sports center and toy launching dock. There is plenty of room for all the chairs and toys outside. Down a few steps, inside, there is an Air-Conditioned lounge with a bar, steam room and bath. There is a natural teak plank floor with grey caulking in herringbone design and lime and gray soft goods.

Equipment

Mechanical and Main systems

Gearbox ZF5000 Series 2,98:1

Glendening engine control

5 Blade Class S Propellers/CJR

CJR Propeller 4,5" Aquamet 22HS

120/208 VAC 3P 60HZ Power Converter ASEA 75 KVA

Naiad At Rest Stabilizers 525 At Rest Stabilizer with 22kW Power Pack

Bow Thrusters with Intel hydraulics for Windlasses and capstans.

Naiad 65kW Bow thruster

Shell Door for Beach Club-Hydraulic

Airhorn: Kahlenberg

Anchor winch and Capstans : (x2)Maxwell VWC8000 Hyd. Windlass, VC800 Capstans

Windscreen Wipers: Speich

Alarm & Monitoring system : Beijer - Wago

Hydraulic Passarelle

Audio/ Visual: Crestron

Batteries and chargers: Victron

ER Ventilation: Delta T System

Fuel oil filters: Racor

HVAC: Northern Lights Technicold 3x Chillers assembly @120,000 BTU/H 10 TON e.a.

Steering System: Data Hydraulics AC /DC Steering

Insulation: Unifrax B15 Engine room and B0 Galley insulation Rockwool Thermal cabin insulation

Navigation and communication equipment: GARMIN or as per custom requirements

Pumps: Headhunter and Depco

Sewage treatment: Headhunter

Toilet system: Headhunter

**ROYAL YACHT
INTERNATIONAL**

**Le Bahia, 39 Avenue Princesse
Grace
, 98000
Monaco**

ROMEO FOXTROT

**P: +377 99 90 72 44
sales@royalyacht.it
<https://royalyachtinternational.com/>**

Deck Equipment

Swim Ladder: 316L Stainles Steel

Crane/Davit: Hydraulic Deck Crane

Handrails: 316L Stainless Steel

Pantograph doors: 4x Pantograph Doors

Sliding doors: Electric Operated main and upper saloon doors

Watertight doors and hatches: Watertight Deck Hatches and Engine room WT Fire Doors

Aft beach Shell door: Hydraulic Actuator Operated Carbon Reinforced Composite Watertight Door

Safety Equipment:

Life Rafts:: 2 x 16 Persons

Fire protection: FirePro Engine Room Fire Protection

Fire and general alarm system: TYCO

Navigation Systems:

Garmin system with 5 large touch screens

Garmin radar

Secondary Furuno radar

PTZ camera system

Entertainment system:

Samsung HD smart TV's throughout

Apple TV throughout

Sonance and JL Audio speakers throughout

Crestron iPad control

Intellian HD

Direct TV system

Internet System:

M,DS Blender Network management

**ROYAL YACHT
INTERNATIONAL**

**Le Bahia, 39 Avenue Princesse
Grace
, 98000
Monaco**

ROMEO FOXTROT

**P: +377 99 90 72 44
sales@royalyacht.it
<https://royalyachtinternational.com/>**

Starlink high speed

Pepwave High Speed

Viasat High Speed

Wireless enterprise grade high speed Wi-Fi throughout

Guests Comfort:

2 Bluewater Water makers

Headhunter sewage/waste treatment center

Fresh Air Make Up- Technicold

AC Supply on Aft Deck

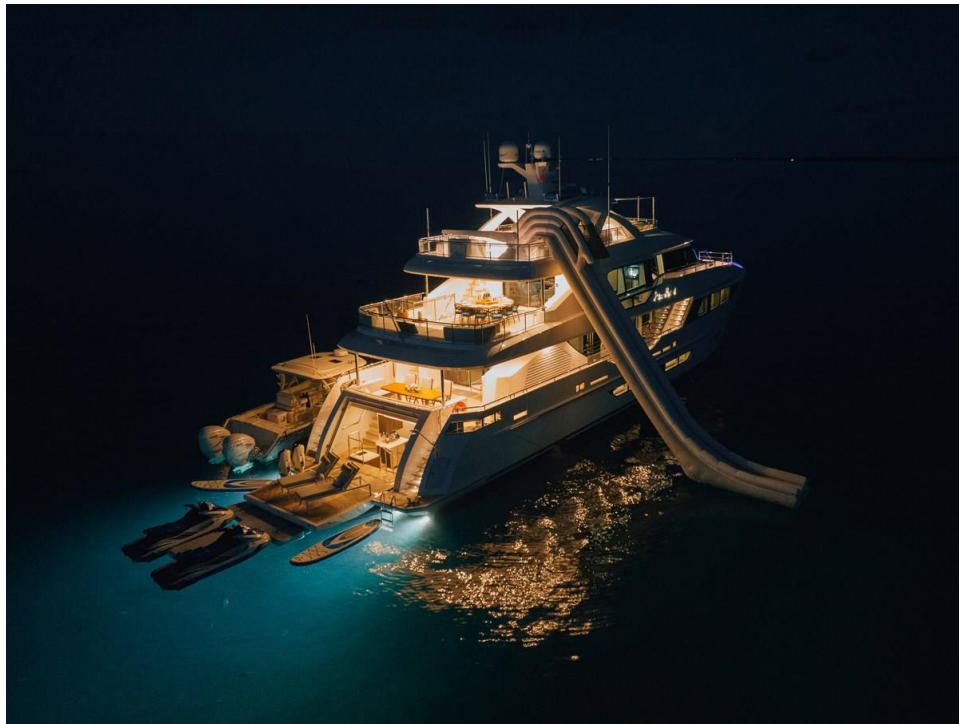
Steam Room and Dayhead in Beach Club

**ROYAL YACHT
INTERNATIONAL**

**Le Bahia, 39 Avenue Princesse
Grace
, 98000
Monaco**

ROMEO FOXTROT

**P: +377 99 90 72 44
sales@royalyacht.it
<https://royalyachtinternational.com/>**



**ROYAL YACHT
INTERNATIONAL**

Le Bahia, 39 Avenue Princesse
Grace
, 98000
Monaco

ROMEO FOXTROT

P: +377 99 90 72 44
sales@royalyacht.it
<https://royalyachtinternational.com/>



**ROYAL YACHT
INTERNATIONAL**

Le Bahia, 39 Avenue Princesse
Grace
, 98000
Monaco

P: +377 99 90 72 44
sales@royalyacht.it
<https://royalyachtinternational.com/>

ROMEO FOXTROT

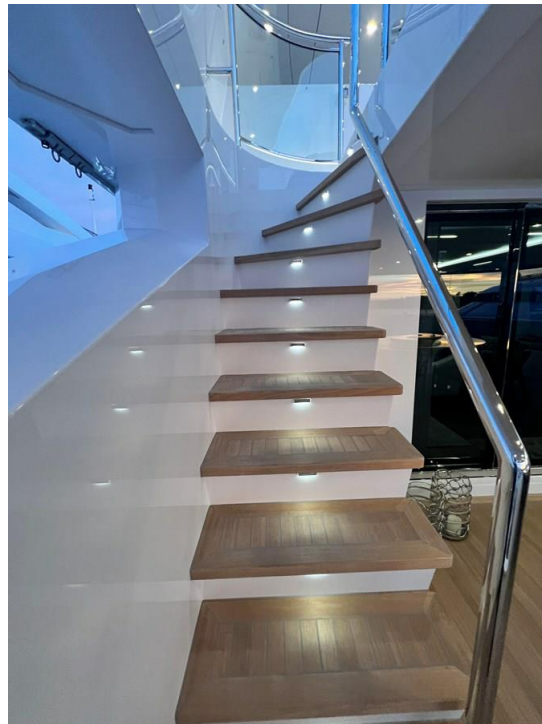


**ROYAL YACHT
INTERNATIONAL**

Le Bahia, 39 Avenue Princesse
Grace
, 98000
Monaco

ROMEO FOXTROT

P: +377 99 90 72 44
sales@royalyacht.it
<https://royalyachtinternational.com/>



**ROYAL YACHT
INTERNATIONAL**

Le Bahia, 39 Avenue Princesse
Grace
, 98000
Monaco

ROMEO FOXTROT

P: +377 99 90 72 44
sales@royalyacht.it
<https://royalyachtinternational.com/>



**ROYAL YACHT
INTERNATIONAL**

**Le Bahia, 39 Avenue Princesse
Grace
, 98000
Monaco**

**P: +377 99 90 72 44
sales@royalyacht.it
<https://royalyachtinternational.com/>**

ROMEO FOXTROT



**ROYAL YACHT
INTERNATIONAL**

Le Bahia, 39 Avenue Princesse
Grace
, 98000
Monaco

ROMEO FOXTROT

P: +377 99 90 72 44
sales@royalyacht.it
<https://royalyachtinternational.com/>



**ROYAL YACHT
INTERNATIONAL**

**Le Bahia, 39 Avenue Princesse
Grace
, 98000
Monaco**

**P: +377 99 90 72 44
sales@royalyacht.it
<https://royalyachtinternational.com/>**

ROMEO FOXTROT



**ROYAL YACHT
INTERNATIONAL**

Le Bahia, 39 Avenue Princesse
Grace
, 98000
Monaco

P: +377 99 90 72 44
sales@royalyacht.it
<https://royalyachtinternational.com/>

ROMEO FOXTROT



**ROYAL YACHT
INTERNATIONAL**

Le Bahia, 39 Avenue Princesse
Grace
, 98000
Monaco

P: +377 99 90 72 44
sales@royalyacht.it
<https://royalyachtinternational.com/>

ROMEO FOXTROT

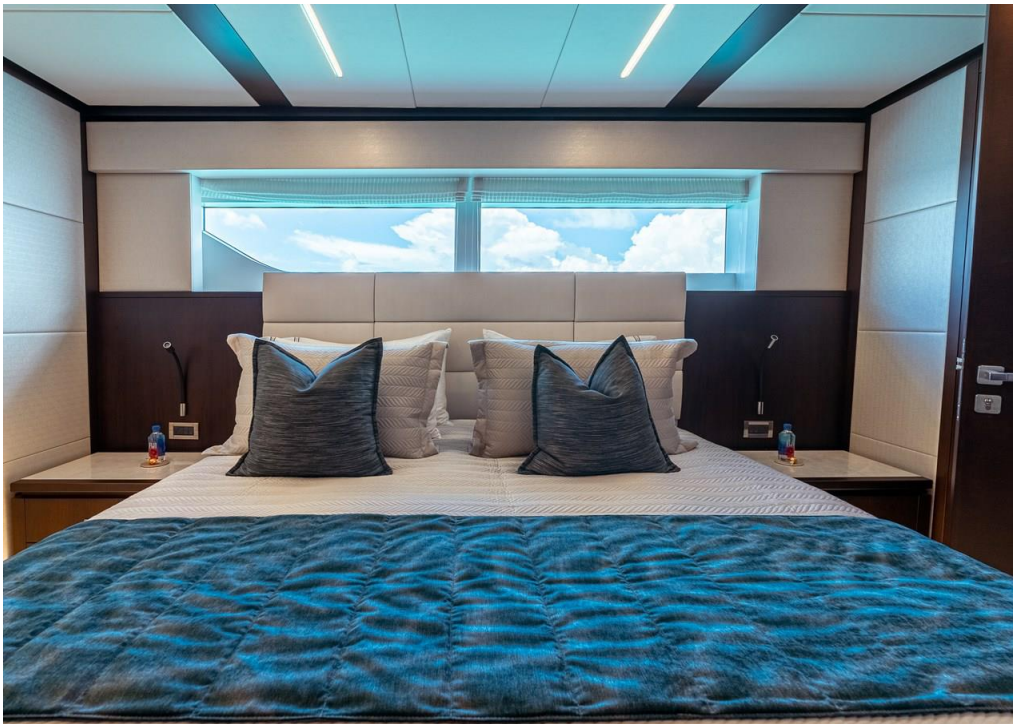


**ROYAL YACHT
INTERNATIONAL**

Le Bahia, 39 Avenue Princesse
Grace
, 98000
Monaco

P: +377 99 90 72 44
sales@royalyacht.it
<https://royalyachtinternational.com/>

ROMEO FOXTROT



**ROYAL YACHT
INTERNATIONAL**

Le Bahia, 39 Avenue Princesse
Grace
, 98000
Monaco

P: +377 99 90 72 44
sales@royalyacht.it
<https://royalyachtinternational.com/>

ROMEO FOXTROT



**ROYAL YACHT
INTERNATIONAL**

Le Bahia, 39 Avenue Princesse
Grace
, 98000
Monaco

P: +377 99 90 72 44
sales@royalyacht.it
<https://royalyachtinternational.com/>

ROMEO FOXTROT



**ROYAL YACHT
INTERNATIONAL**

Le Bahia, 39 Avenue Princesse
Grace
, 98000
Monaco

ROMEO FOXTROT

P: +377 99 90 72 44
sales@royalyacht.it
<https://royalyachtinternational.com/>