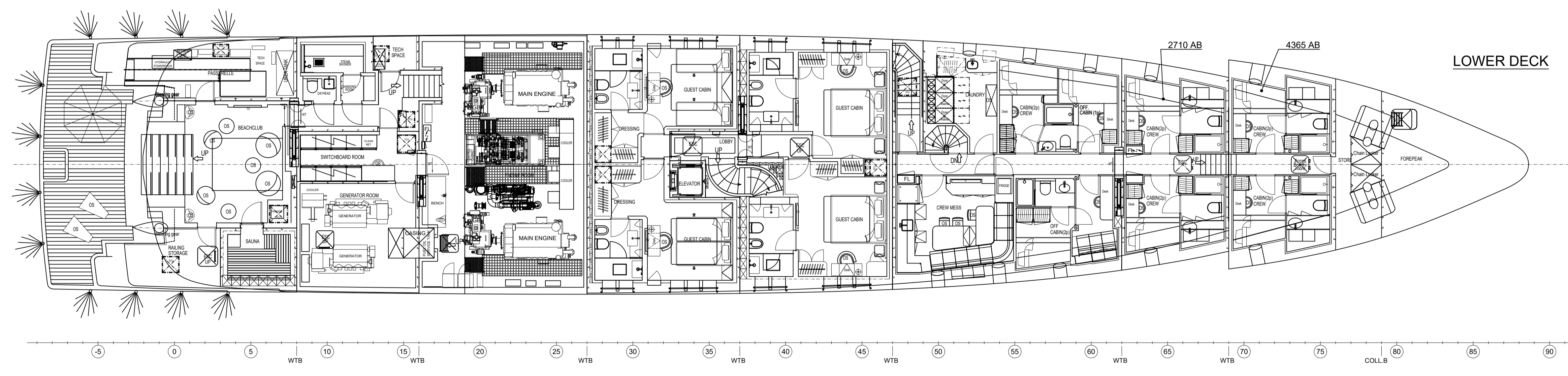
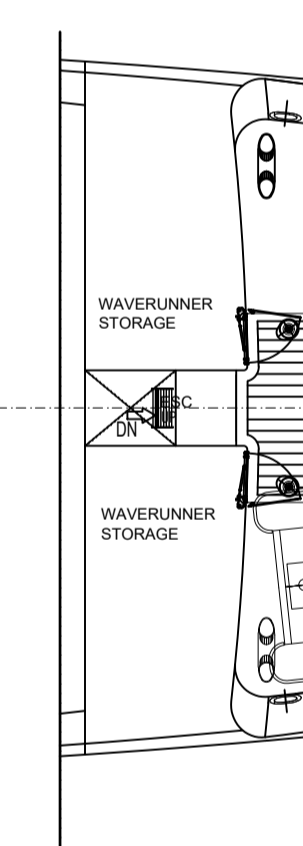


WAVERUNNER'S STORAGE
7000 ab. BL

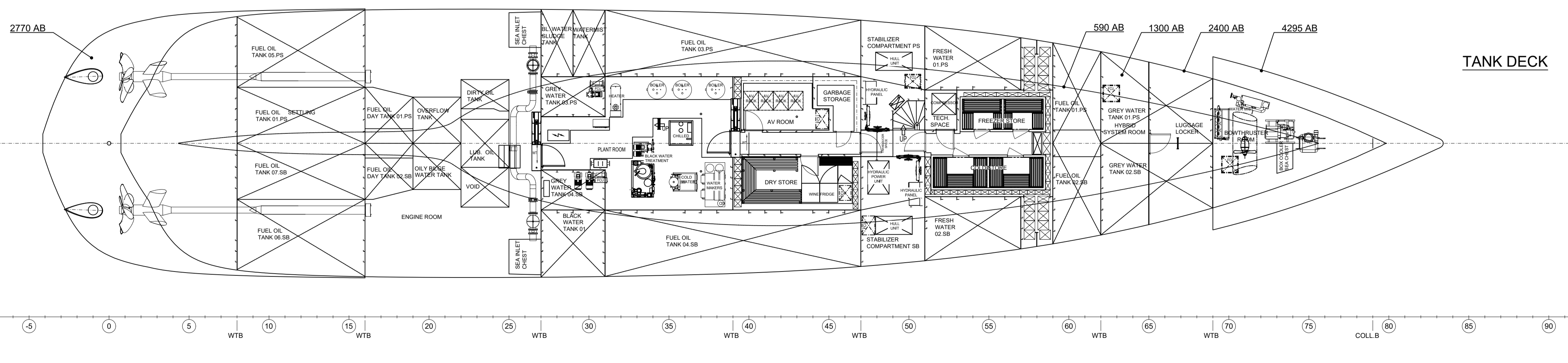


NOTE:

DIMENSIONS WILL BE USED JUST FOR REFERENCE

MAIN DIMENSIONS

LENGTH OVERALL	: 60.00 m
LENGTH WATERLINE	: 54.30 m
BEAM OVERALL (MEASURED AT HULL)	: 10.60 m
BEAM MOULDED	: 10.20 m
DEPTH MOULDED	: 5.20 m
DRAUGHT FULL LOAD	: 3.40 m



AS BUILT

REV	DATE	DRWN	CHKD	APPROV	REVISION SUBJECT
J	08-06-2021	AT	GN	OP	AS BUILT
APPROVED	NAME	DATE			
CLASS					
OWNER					
© Amels B.V. Vlasingen, The Netherlands					
DRAWN	DR	FORMAT	ASP	PROJECTION	
CHECKED	CP	SCALE	1:100		
APPROVED	CP	DATE	01-02-2018		
GENERAL ARRANGEMENT PLAN					
SERIES	LE 188	DERIVED FROM DWG			
COMP NO	SECT NO	YARD NUMBER	DWG NO	SHEET	REVISION
-	-	18803	0001.10	1	J