



Santosh

LENGTH 108' 5" (33.05M) **BUILDER** GULF CRAFT INC **YEAR** 2020/2022
GUESTS 10 **CABINS** 5 **CREW** 6 **ASKING PRICE** \$6,450,000 US DUTY PAID

OVERVIEW

Beam	22' 8" (6.91m)	Fuel	4,000 Gal
Draft	5' 6" (1.68m) Max	Water	800 Gal
Speed	15.4/20 knots (approx)	Interior Designer	Gulf Craft
Construction	FRP	Flag	CAYMAN ISLANDS
Gross Tonnage	199 t	Location	Sint Maarten
Engines	1874 HP,Twin, Inboard, Diesel, MAN, V12-1900, 1697hrs / 1692hrs	Classification	✠ RINA ✠

[CONTACT YOUR PREFERRED BROKER FOR MORE INFORMATION](#)

OVERVIEW

SANTOSH represents an amazing opportunity to purchase a very well-equipped, and very lightly used Gulf Craft Majesty 100. With a custom interior in light colors, floor to ceiling windows and large glass doors, the transfer from interior to exterior spaces is seamless.

SANTOSH'S salon features three large sofas providing an ideal gathering space for socializing indoors. The dining table for 10 is forward and separated by a credenza housing a 55" TV. Her skylounge features a large L-shaped sofa, gaming table, and fully opening doors which create a true alfresco living space.

Five large staterooms can easily sleep 10 owners and guests. The on-deck master stateroom features a King bed and oversized windows. The master ensuite features marble accents and a large waterfall shower. Below deck are four additional staterooms for eight guests perfect for families or couples.

SANTOSH'S exterior was designed for entertaining. The main deck aft features two fold-out balconies, opening this area up for large gatherings or intimate dinners. The skylounge aft features a bar, grill, and lounge chairs, which can all benefit from the custom-made sail shades if needed.

MAIN FEATURES

- ▶ Very lightly used; only 1650 hours on MAN 1900hp
- ▶ Five staterooms with on-deck master stateroom
- ▶ Generous outdoor entertaining spaces
- ▶ ABT-TRAC zero-speed stabilization
- ▶ Large Williams tender, two Sea Doo's & two Sea Bobs, all extremely low hours
- ▶ New shore power convertor and A/V system with Starlink
- ▶ All service records kept by a very meticulous crew
- ▶ Outstanding condition in all aspects
- ▶ US Duty paid

NAVIGATION & EQUIPMENT

- ▶ Radars Garmin, Open-Array, GMR 606 & 604 xHD, Tramat 6 kW, maximum range: 72nm
- ▶ Sonar Garmin, GSD24
- ▶ Wind Transducer Garmin, Gwind
- AIS Garmin, 600 Blackbox Transceiver
- Navigation Lights Dan Haan Rotterdam, 24V DC
- Navigation Displays Garmin, Main Console GPSmap 8417
- Instrumentation Display Garmin, Type GMI 20
- BNWAS JRC, Type: JCX-161
- Transducer Airmar, Type: B164 SS164, maximum depth 1200-1800 ft
- Autopilot Garmin, GHC 20
- Searchlight JABSCO, 24V DC
- Magnetic Compass Ritchie, Type: Northern Hemisphere
- Night Vision Camera FLIR, Model 3245 NTSC, 24V DC with joystick
- Chart Plotters Garmin, GPSMAP 8417
- GPS Garmin, 19x NMEA
- CCTV Cameras Hikvision DS-2DE4225IW for engine room forward and aft
- IP66 PTZ CCTV Cameras Hikvision DS-2CD1123 GOE-1 / IP66 dome camera for flybridge, main deck, gunnels port and stbd
- Digital Video Recorder Hikvision DS-7616NI-K2 / 16P-16-CH with Poe NVR
- Wheelhouse
- Camera Display Garmin GMM 8417, 24V DC

COMMUNICATION EQUIPMENT

- VHF Radio JRC, NCM-1770
- MF/HF Radios JRC, JSS 2150NB
- Navtex Receiver JRC, NCR-333
- DGPS JRC, JLR 7900
- GMDSS Batteries Victron, type: 12V-165 AH
- Satellite Phone Thuraya Phone
- Intercom System Panasonic PABX
- Master Station Intercom Zenitel, type: Vingtor ETB5

DECK EQUIPMENT

Anchor Winch	Italwinch, Sun E Windlass 1900, Hydraulic, 5.5 HP (4 kW), 1900kg Pulling power, 12m/min speed, 316L material
Anchors	Pool TW SHHP, 114 kg 150m length, 12.5mm diameter, Chain Grade: U2
Mooring Ropes	HT Polypropylene 3 strand, 24 mm diameter, 70 m length
Capstans	Italwinch – Aran 2300, 24V DC, 2300W
Tender Lift	Opacmare 5211.12.08.24, Lifting capacity with swim platform = 800 Kg.
▶ Air horn	

MECHANICAL EQUIPMENT

- ▶ Twin MAN V12-1900, 1874 hp (1397 kW) 2300 RPM diesel engines (Port Serial Number: 71054198195424, Stbd Serial Number: 71054188255424)
- Engine hours Port 1,697 hrs
 Starboard 1,692 hrs (Oct 2023)
- ▶ Water-cooled 4-stroke turbocharged engines with charge air intercooler and waste gate
- ▶ Gearboxes ZF Marine 3050 A, Gear Ratio 2.520:1 A (Port Serial Number 50040341, Stbd Serial Number 50040340)
- ▶ 5-Blade fixed pitch Nibrall Cu3 propellers
- Shafts CJR, Duplex Steel, 90mm diameter, 4,120 mm shaft length, Inclination Angle: 12°
- ▶ Generators Twin Kohler 55kW, 230/400V AC, 50 Hz, 3-phase
- Generator hours Port 4,750 hrs
 Starboard 4,770 hrs (Oct 2023)
- ▶ Stabilizer Twin ABT-TRAC 370 Fin Stabilizers
- ▶ Power System Electrical, 230-400V AC, 50Hz, 3-phase, 24V DC
- ▶ Climma air conditioning system, 96,000 BTU/h powered by 400V AC

STEERING SYSTEM

Steering Gear System	Marsili Aldo
Bow Thruster	ABT-TRAC, 16" HYD, 65 HP
Yacht Controller	Yacht Controller, Dual Band Remote Controller

LUBE OIL SYSTEM

AC Pump	Gianneschi, FQ70 T NO BY-PASS, 230/400V AC, 50Hz, Q:70 l/min, Power: 1.5 kW, RPM: 1400
▶ Manual Pump Sigma K1	

EXHAUST AND VENTILATION EQUIPMENT

Engine Room Exhaust Fan

- ▶ CEM, VE56-P1, 460V AC, 50Hz,
- ▶ Q: 200 m3/min, Power: 3.6 kW,
- ▶ RPM: 1700

Fire Dampers (Engine Room)

▶ CEM, FD-A60	
Insulation Class	A60 Rated
Size	570x570 mm

Fire Dampers (Engine Room+ Galley)

▶ Gianneschi, G-MFD,	
Insulation Class	A0/A60
Rated Size	100x100 mm

Garage Room Blower

Gianneschi, ELPROM, Power: 0.25 kW, RPM: 2750

Exhaust Blowers

Silent, TD 160/100N, Power:25W, RPM: 2500

AIR CONDITIONING SYSTEM

Chillers	CLIMMA, CWS 961s Nominal Capacity: 96,000 B.T.U/hr, Supply; 400V AC, 50Hz
AC Sea Water Pump	Calpeda, 1 HP
Chilled Water Pump	Calpeda, 5.5kW
Fresh Air Units	CLIMMA, 20k BTU/hr, Supply: 230V,50Hz,

WATER SYSTEMS

FRESHWATER SYSTEM

Freshwater AC Pump

Gianneschi, ECOINOX 418	
Head	H: 50/10 m
Flowrate	Q: 5/90 l/min, 230/400V, 50Hz
RPM	2900
Power	0.85 kW

Fresh Water DC Pump

Gianneschi, ECOINOX 418,	
Head	H: 47/10 m
Flowrate	Q: 10/90 l/min, 24V DC.
RPM	2800
Power	0.85 kW

Water Maker

Idromar MC 2J Duplex	
Capacity	130x2 liters/hour, 380VAC, 50 Hz, 3-phase, 3kW, 190Kgs.

Water Maker Pump

Lowara - Flowrate:	23-73 l/min
--------------------	-------------

GREY WATER SYSTEM

Grey Water Pump	Gianneschi, Flowrate Q: 170/20 l/min
-----------------	--------------------------------------

BLACK WATER SYSTEM

Electric Toilets	Tecma Toilets
Black Water Pump	Gianneschi, Flowrate Q: 170/20 l/min
Sewage Treatment Plant	Selmar, Blue Sea 2500 Plus, S/N: 2019H26001, Power: 400VAC, 50Hz, 3-phase + G

BILGE SYSTEM ELECTRIC

Bilge Pump	Gianneschi, Q:500/100 l/min
Manual Bilge	Pump Super Lario 3"
Submersible	Electric Bilge Pumps: Rule, type: 3,700 gallons/hour

TANK CAPACITIES

Fuel Capacity	4,000 g / 15,142 l
Fresh Water Capacity	800 g / 3,028 l
Grey Water Capacity	200 g / 757 l
Black Water Capacity	200 g / 757 l

ELECTRICAL SYSTEMS

- ▶ 24V DC System
- ▶ Glendenning Cable Master 25m shore power cable
- ▶ 50kW Isolation transformer (new)

BATTERY CHARGERS

Engines Battery Chargers	Victron, Blue Smart, Output: 16A,24V DC, Supply: 230V AC
Service Battery Charger	Victron Energy, Skylla-i, Output: 80 A, 24V DC, number of outputs: 3
Machinery Battery Charger	Victron Energy, Skylla-i, Output: 80 A, 24V DC, number of outputs: 3
Generator Battery Charger:	Victron, Blue Smart, Output: 16A, 24V DC
Emergency Battery Charger Manufacturer	Victron Energy, Centaur, Output: 30 A, 24V DC

DISTRIBUTION PANELS

- ▶ 230V AC power is distributed through distribution panels located in wheelhouse, galley passage area, crew lounge, and guest lobby
- ▶ 230V AC Main Deck distribution panel
- ▶ 230V AC Main Galley and Forward Crew distribution panel
- ▶ 230V AC Lower Deck distribution panel
- ▶ 230V AC Aft Crew distribution panel

SAFETY & FIRE FIGHTING EQUIPMENT

SAFETY EQUIPMENT

- ▶ Fitted with safety equipment and life-saving equipment according to the regulations by RINA rules
- ▶ Solas or MED approved inflatable life jacket with light and whistle - Adult 23 pcs. + 1 XXL
- ▶ Solas approved inflatable life jacket – Child 2 pcs.
- ▶ 2 x Lifebuoy with light & smoke
- ▶ 2 x Lifebuoy with buoyant lifeline
- ▶ Muster station
- ▶ Life raft 8 persons (type b) port & stbd
- ▶ Life raft 10 persons (type b) port & stbd
- ▶ 3 x First aid kits (category c)
- ▶ 4 x Sets of line throwing appliances (4 line plus 4 charges)
- ▶ 6 x Ships rocket parachute flares
- ▶ EPIRB
- ▶ SART
- ▶ 2 x Two-way radio telephone sets (VHF)
- ▶ Embarkation ladder

- ▶ Man overboard (Jason's cradle)
- ▶ 8 x Smoke hood
- ▶ Immersion suits with inherent insulation - Adult 18 pcs.
- ▶ Immersion suits with inherent insulation - XXL 2 pcs.
- ▶ Immersion suits with inherent insulation - Child 2 pcs.

FIREFIGHTING EQUIPMENT

- ▶ 2 x Fire blankets
- ▶ 17 x Fire extinguishers 6kg dry powder (11pcs + 50% = 17pcs.)
- ▶ 3 x Fire extinguishers 9kg carbon dioxide (2pcs + 50% = 3pcs.)
- ▶ 1 x Fixed fire extinguisher fm-200
- ▶ 27 x Smoke detector
- ▶ 6 x Space or group of spaces monitored by heat detector(s)
- ▶ Control panel for fire detection and alarm system
- ▶ 12 x General alarm
- ▶ 15 x Fire bells (klaxon)
- ▶ Fm-200 remote release station
- ▶ 10-meter bilge hose with strainer
- ▶ Remote control for fuel oil valves
- ▶ 4 x Engine room fire dampers
- ▶ 2 x Service & accommodation fire damper
- ▶ 4 x Fire hose reels – 38.1mm x 20mtr jet spray nozzle stz – 1 ½"
- ▶ 4 x Fire hydrants
- ▶ 1 x Fire pump
- ▶ 1 x Bilge pump
- ▶ 1 x Portable emergency fire/bilge diesel pump
- ▶ 1 x Remote control for fire dampers
- ▶ 1 x Remote control for fire pump
- ▶ 1 x Fuel oil pump remote shut off
- ▶ 1 x Emergency switch board
- ▶ 10 x Call points
- ▶ 2 x Fire axes
- ▶ Safety plan
- ▶ 1 x International shore connection
- ▶ 2 x Sets of Emergency source of electrical power
- ▶ 1 x Ventilation remote control or shut-off
- ▶ 2 x Fireman's outfits
- ▶ 2 x Explosion proof fireman's radios
- ▶ 1 x Fire main isolating valve
- ▶ 1 x Garage sprinkler isolating valve
- ▶ 2 x Garage protected by water sprinklers
- ▶ Push button switch for general alarm
- ▶ Portable gas detector
- ▶ Solas poster and signs showing survival craft and equipment operating instructions
- ▶ Training manual
- ▶ Instruction for onboard maintenance
- ▶ Life-saving signal and rescue poster
- ▶ Gas fumes detectors loc @ garage room: Salwico GD 2 pcs.

EXCLUSIONS

-
- ▶ Intrepid towed tender

DISCLAIMER

–

Details of this vessel are offered in good faith but we cannot guarantee or warrant the accuracy of this information nor warrant the condition of the vessel. Buyer should instruct his agents, and/or his surveyors, to investigate such details as the buyer desires validated. This vessel is offered subject to prior sale, price change, or withdrawal without notice.



*This document is not contractual. All specifications are given in good faith and offered for informational purposes only. The publisher and company do not warrant or assume any legal liability or responsibility for the accuracy, completeness, or usefulness of any information and/or images displayed. Yacht inventory, specifications and charter prices are subject to change without prior notice. None of the text and/or images used in this brochure may be reproduced without written consent from the publisher.





*This document is not contractual. All specifications are given in good faith and offered for informational purposes only. The publisher and company do not warrant or assume any legal liability or responsibility for the accuracy, completeness, or usefulness of any information and/or images displayed. Yacht inventory, specifications and charter prices are subject to change without prior notice. None of the text and/or images used in this brochure may be reproduced without written consent from the publisher.



*This document is not contractual. All specifications are given in good faith and offered for informational purposes only. The publisher and company do not warrant or assume any legal liability or responsibility for the accuracy, completeness, or usefulness of any information and/or images displayed. Yacht inventory, specifications and charter prices are subject to change without prior notice. None of the text and/or images used in this brochure may be reproduced without written consent from the publisher.



*This document is not contractual. All specifications are given in good faith and offered for informational purposes only. The publisher and company do not warrant or assume any legal liability or responsibility for the accuracy, completeness, or usefulness of any information and/or images displayed. Yacht inventory, specifications and charter prices are subject to change without prior notice. None of the text and/or images used in this brochure may be reproduced without written consent from the publisher.



*This document is not contractual. All specifications are given in good faith and offered for informational purposes only. The publisher and company do not warrant or assume any legal liability or responsibility for the accuracy, completeness, or usefulness of any information and/or images displayed. Yacht inventory, specifications and charter prices are subject to change without prior notice. None of the text and/or images used in this brochure may be reproduced without written consent from the publisher.



*This document is not contractual. All specifications are given in good faith and offered for informational purposes only. The publisher and company do not warrant or assume any legal liability or responsibility for the accuracy, completeness, or usefulness of any information and/or images displayed. Yacht inventory, specifications and charter prices are subject to change without prior notice. None of the text and/or images used in this brochure may be reproduced without written consent from the publisher.



*This document is not contractual. All specifications are given in good faith and offered for informational purposes only. The publisher and company do not warrant or assume any legal liability or responsibility for the accuracy, completeness, or usefulness of any information and/or images displayed. Yacht inventory, specifications and charter prices are subject to change without prior notice. None of the text and/or images used in this brochure may be reproduced without written consent from the publisher.



*This document is not contractual. All specifications are given in good faith and offered for informational purposes only. The publisher and company do not warrant or assume any legal liability or responsibility for the accuracy, completeness, or usefulness of any information and/or images displayed. Yacht inventory, specifications and charter prices are subject to change without prior notice. None of the text and/or images used in this brochure may be reproduced without written consent from the publisher.



*This document is not contractual. All specifications are given in good faith and offered for informational purposes only. The publisher and company do not warrant or assume any legal liability or responsibility for the accuracy, completeness, or usefulness of any information and/or images displayed. Yacht inventory, specifications and charter prices are subject to change without prior notice. None of the text and/or images used in this brochure may be reproduced without written consent from the publisher.

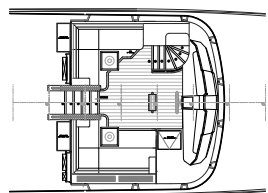


*This document is not contractual. All specifications are given in good faith and offered for informational purposes only. The publisher and company do not warrant or assume any legal liability or responsibility for the accuracy, completeness, or usefulness of any information and/or images displayed. Yacht inventory, specifications and charter prices are subject to change without prior notice. None of the text and/or images used in this brochure may be reproduced without written consent from the publisher.

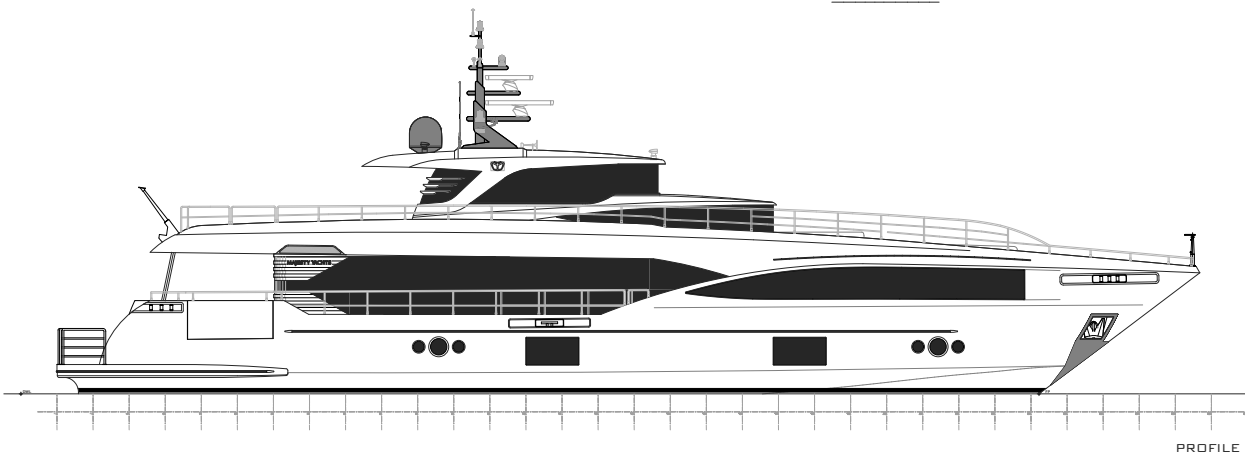


*This document is not contractual. All specifications are given in good faith and offered for informational purposes only. The publisher and company do not warrant or assume any legal liability or responsibility for the accuracy, completeness, or usefulness of any information and/or images displayed. Yacht inventory, specifications and charter prices are subject to change without prior notice. None of the text and/or images used in this brochure may be reproduced without written consent from the publisher.

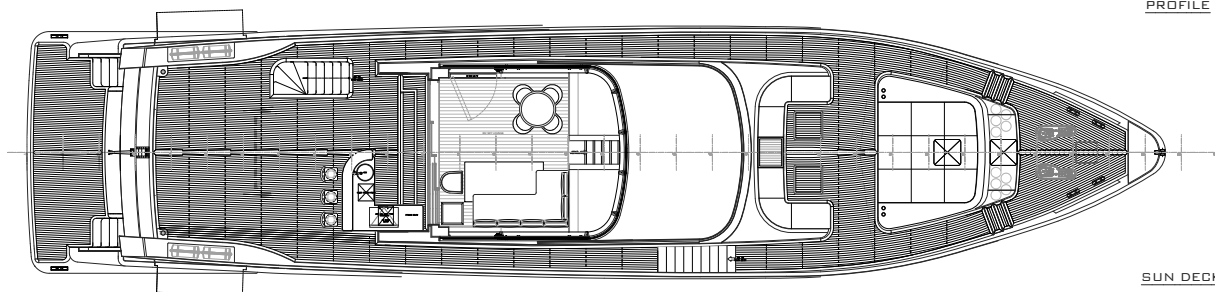
GENERAL ARRANGEMENT



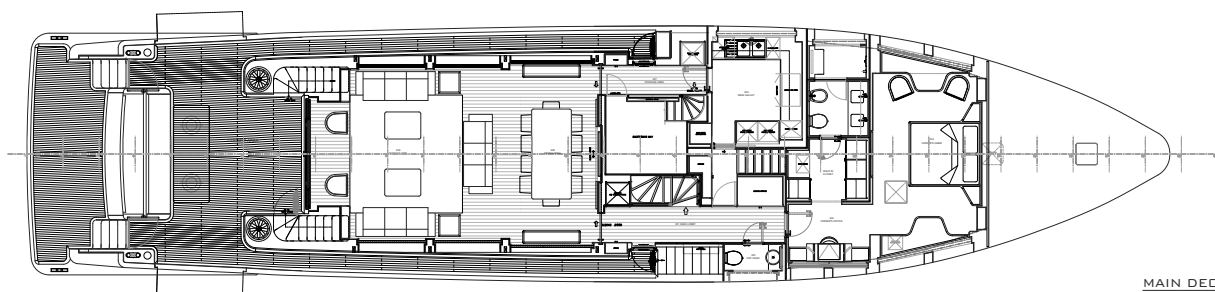
WHEELHOUSE



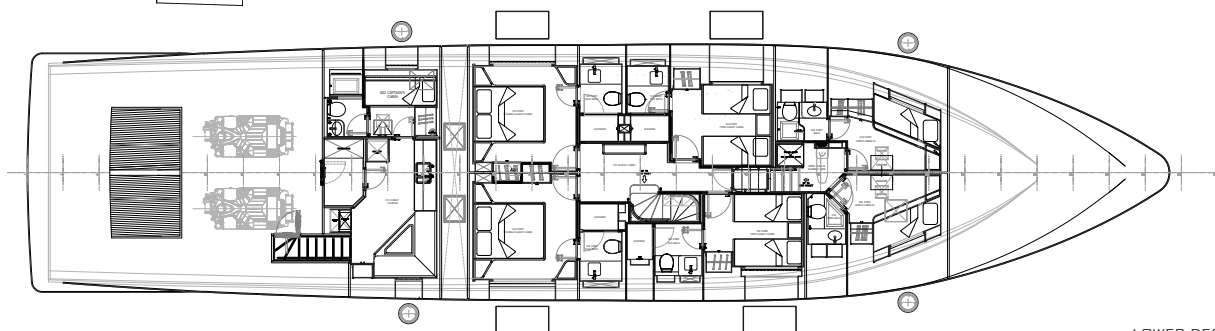
PROFILE



SUN DECK



MAIN DECK



LOWER DECK

*This document is not contractual. All specifications are given in good faith and offered for informational purposes only. The publisher and company do not warrant or assume any legal liability or responsibility for the accuracy, completeness, or usefulness of any information and/or images displayed. Yacht inventory, specifications and charter prices are subject to change without prior notice. None of the text and/or images used in this brochure may be reproduced without written consent from the publisher.